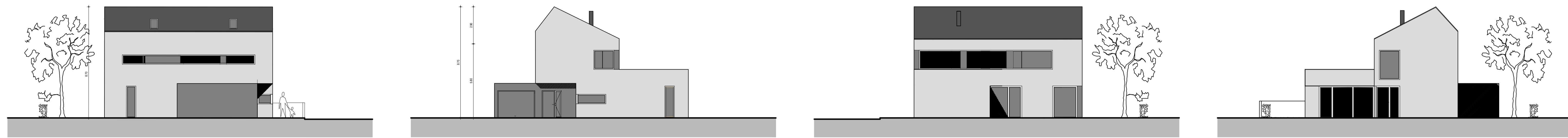
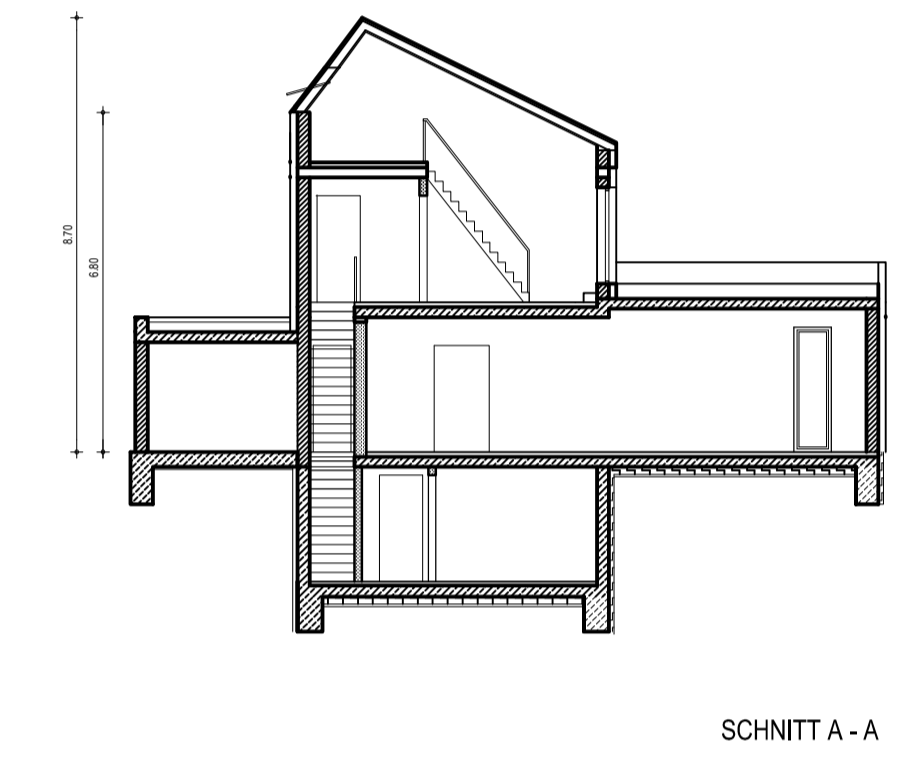
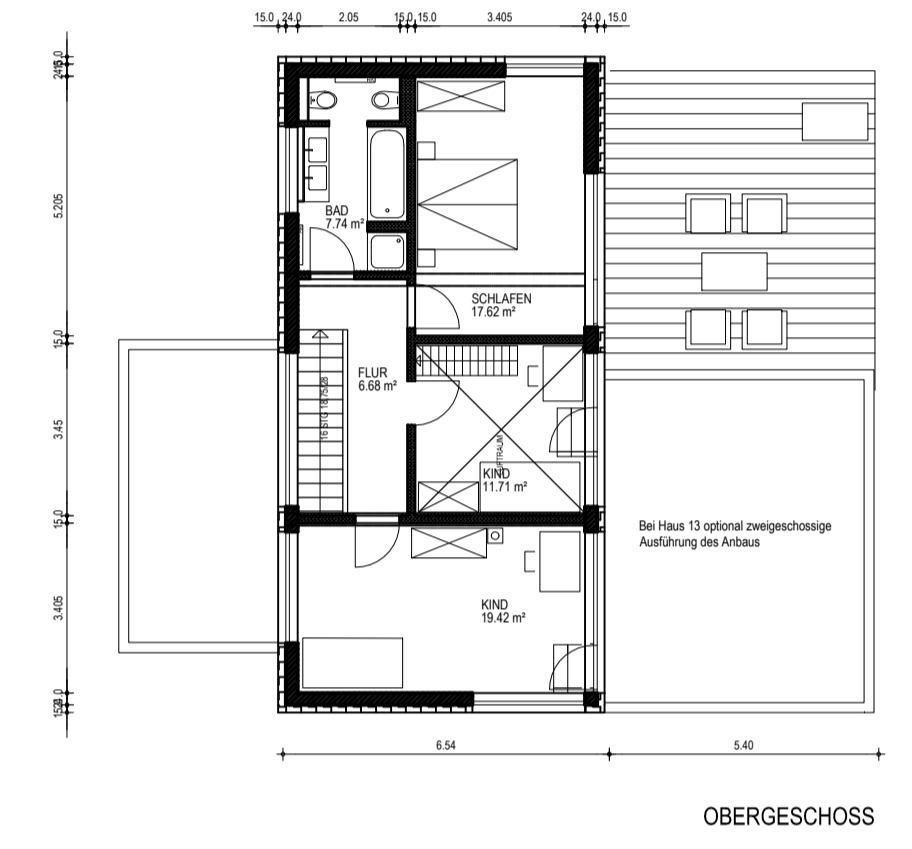
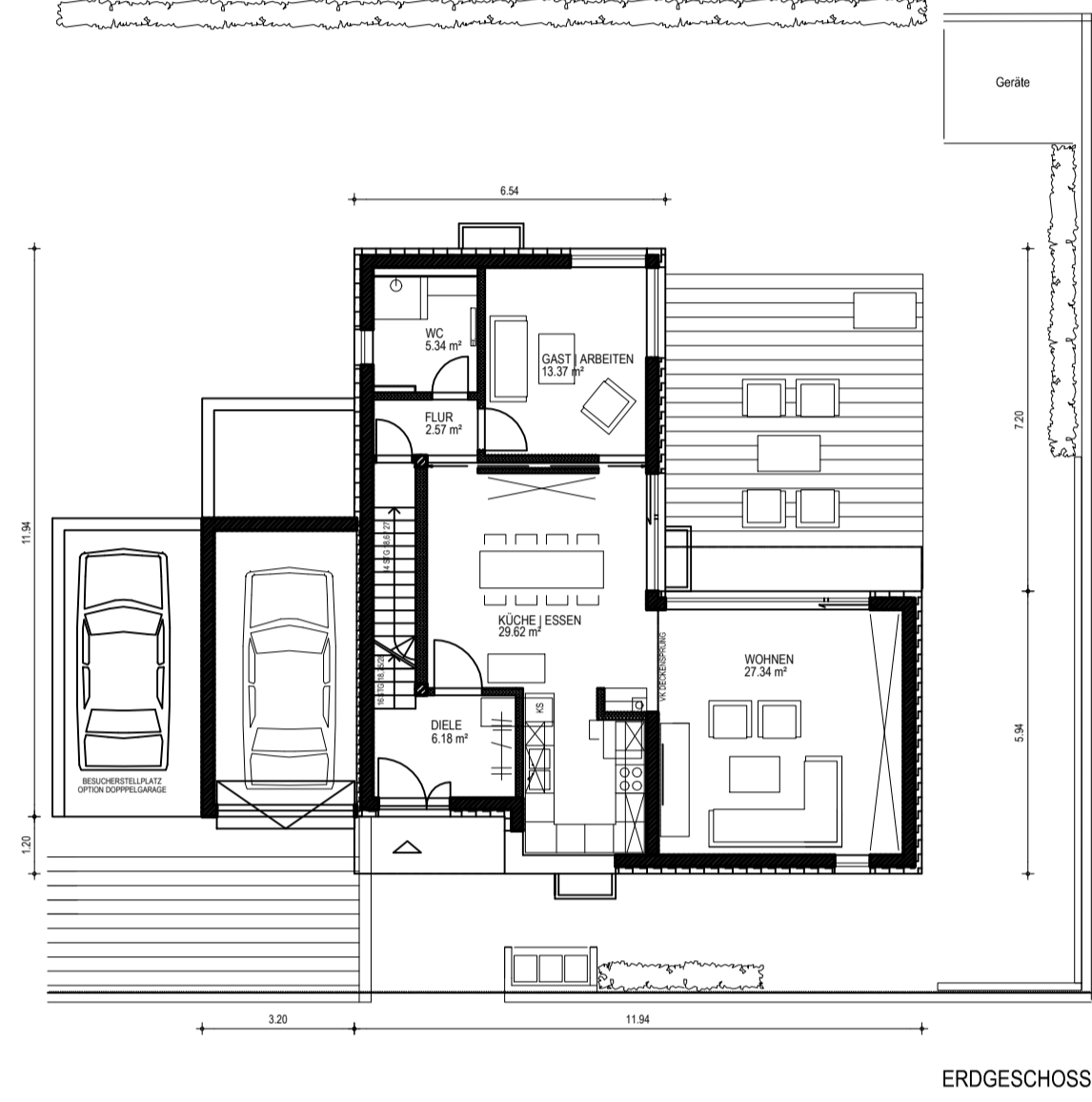
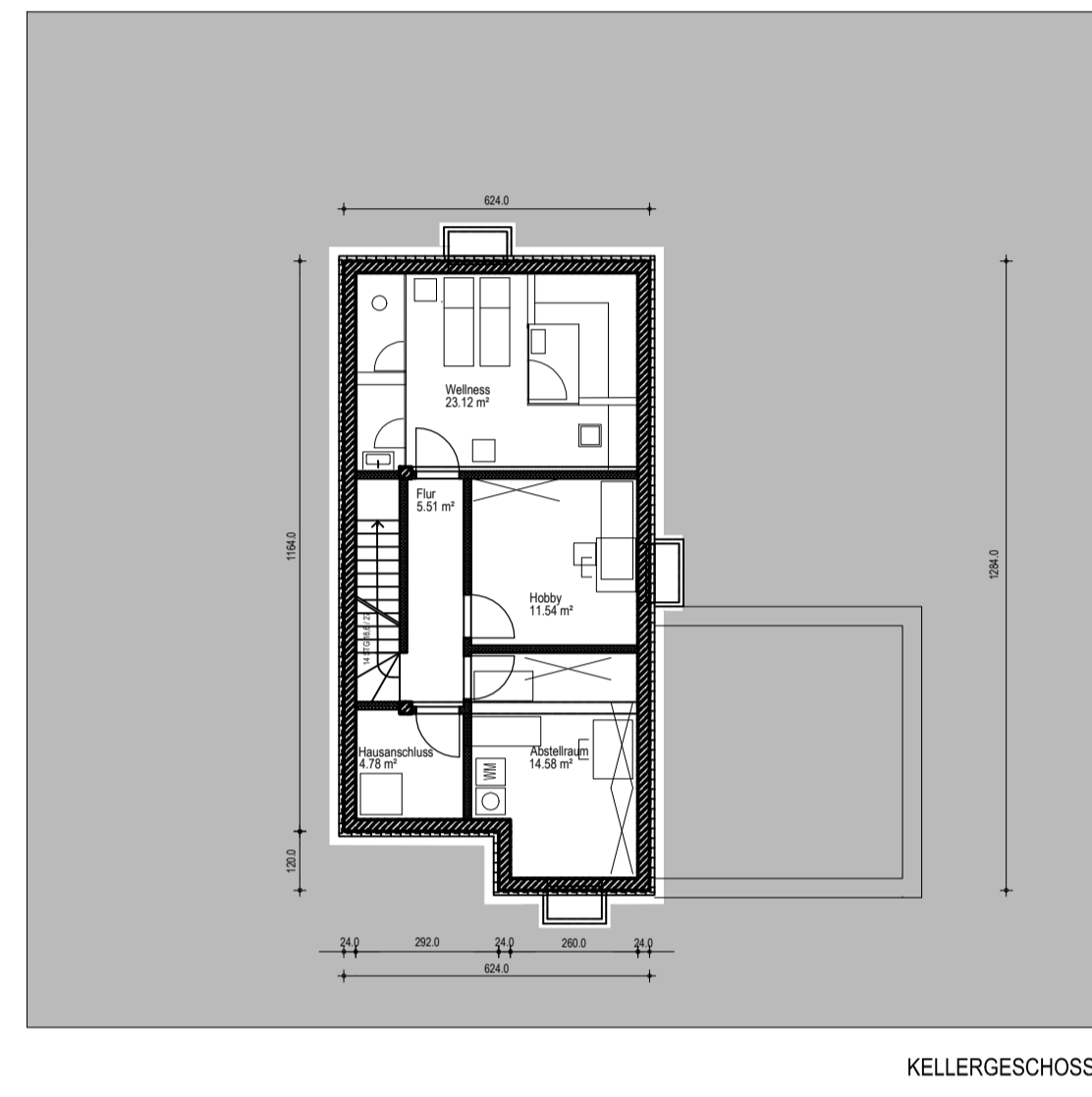


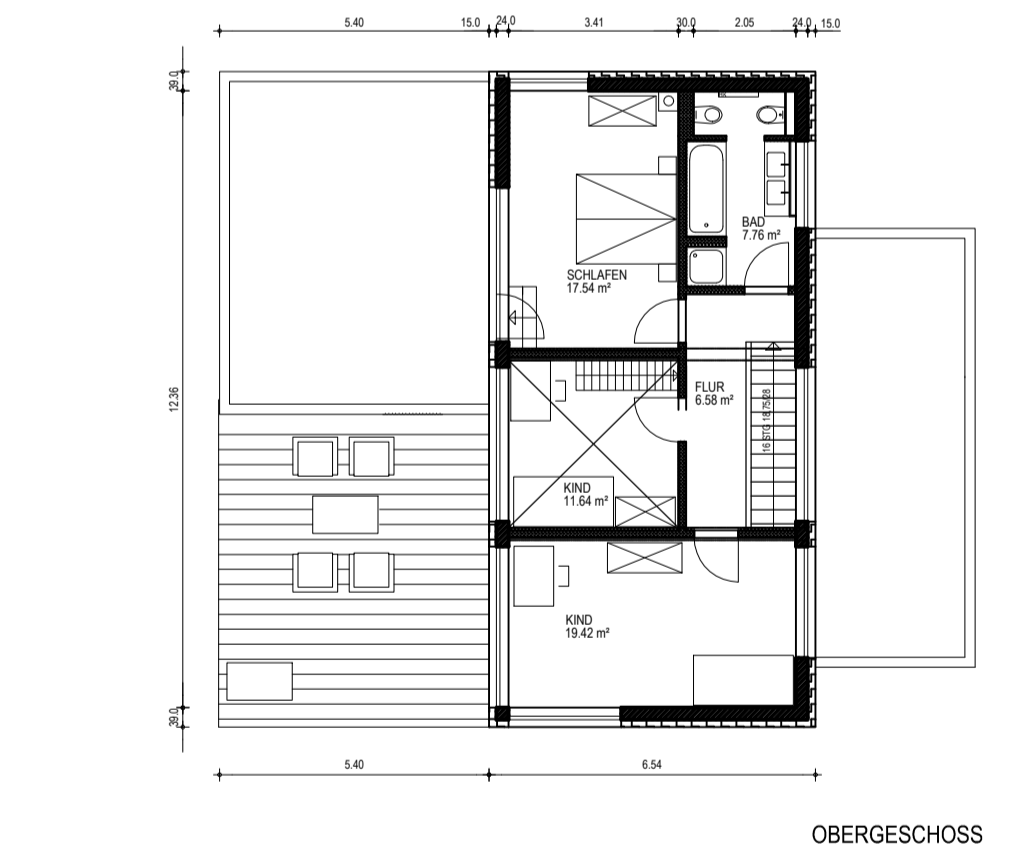
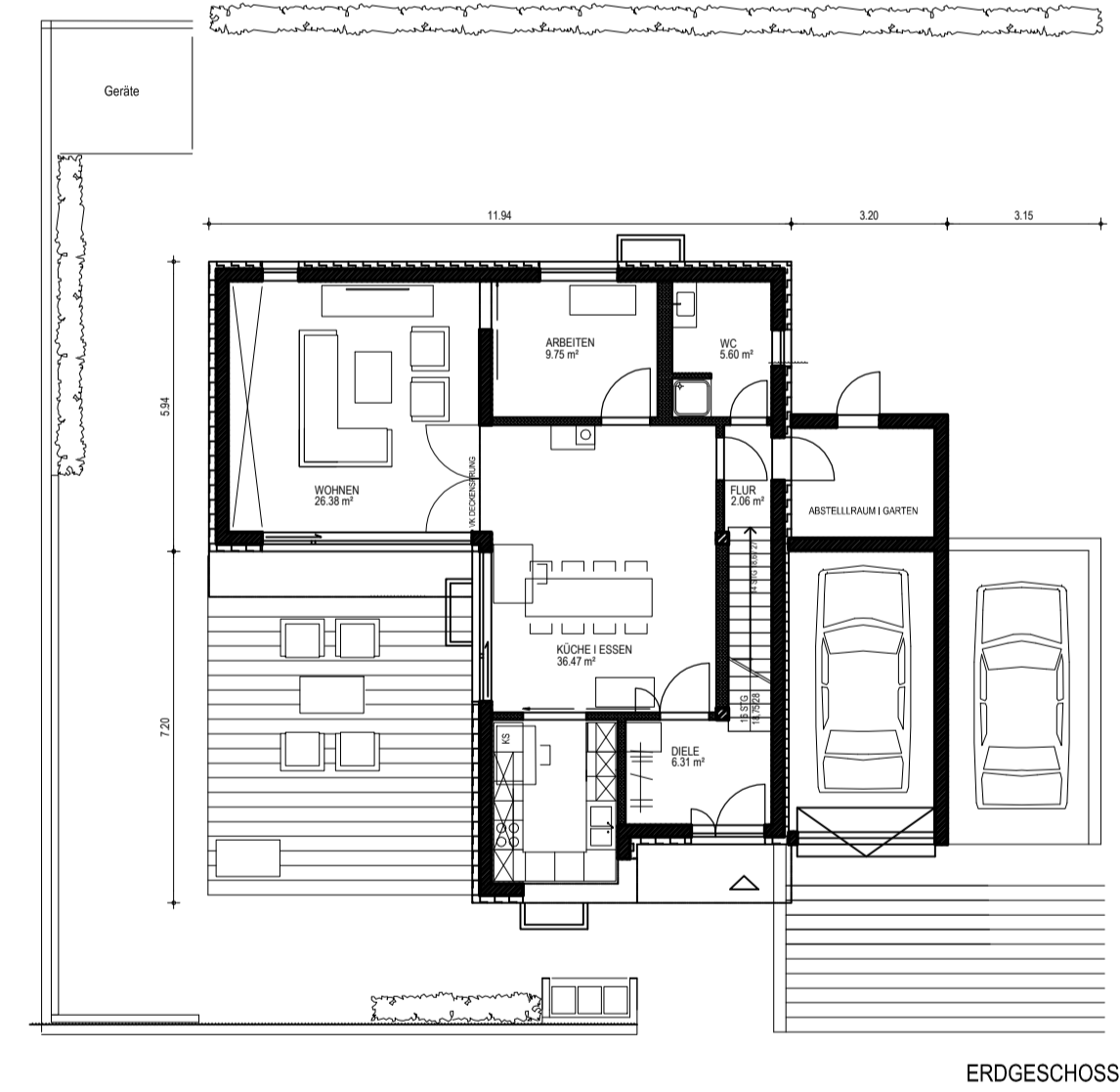
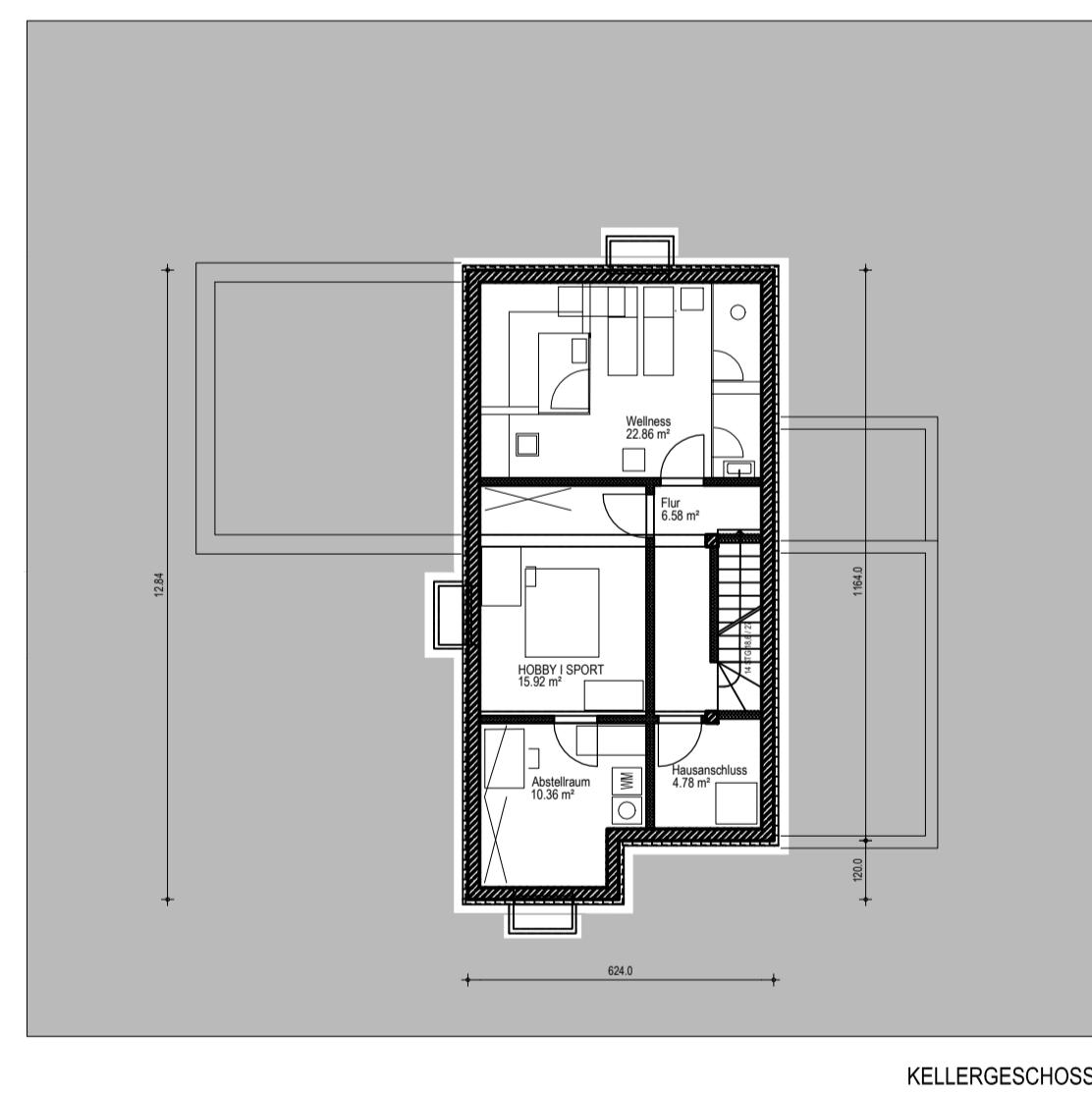
FASSADEN EINFAMILIENHÄUSER (HAUSTYP I)



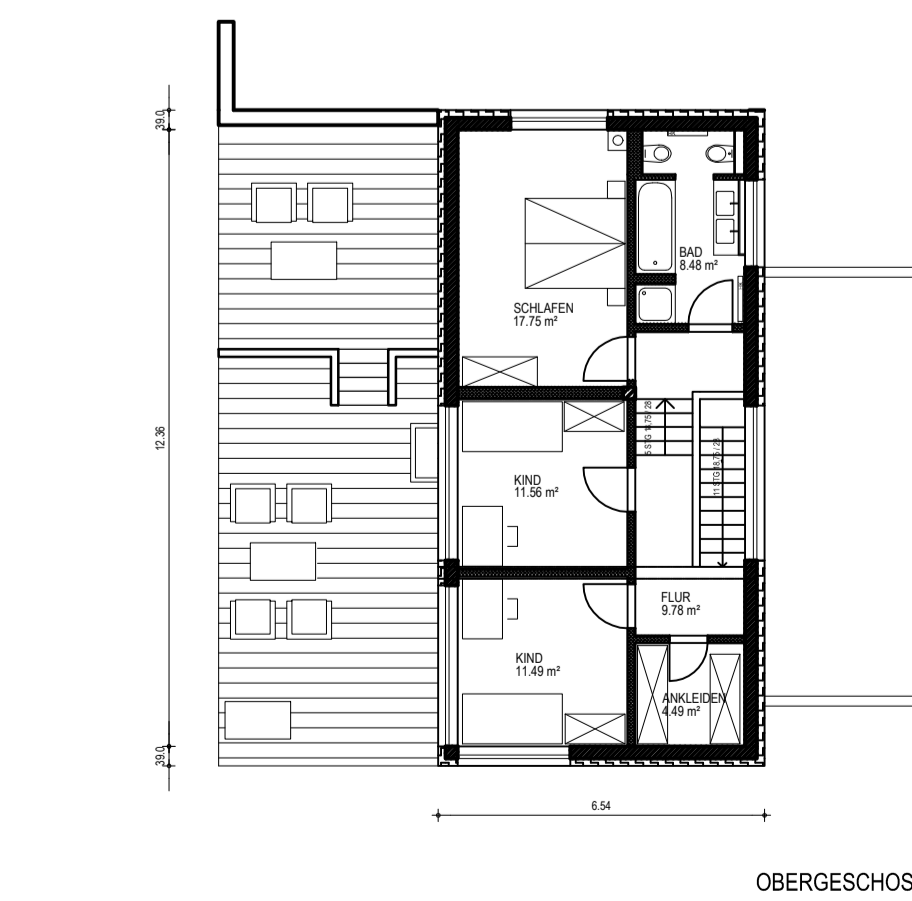
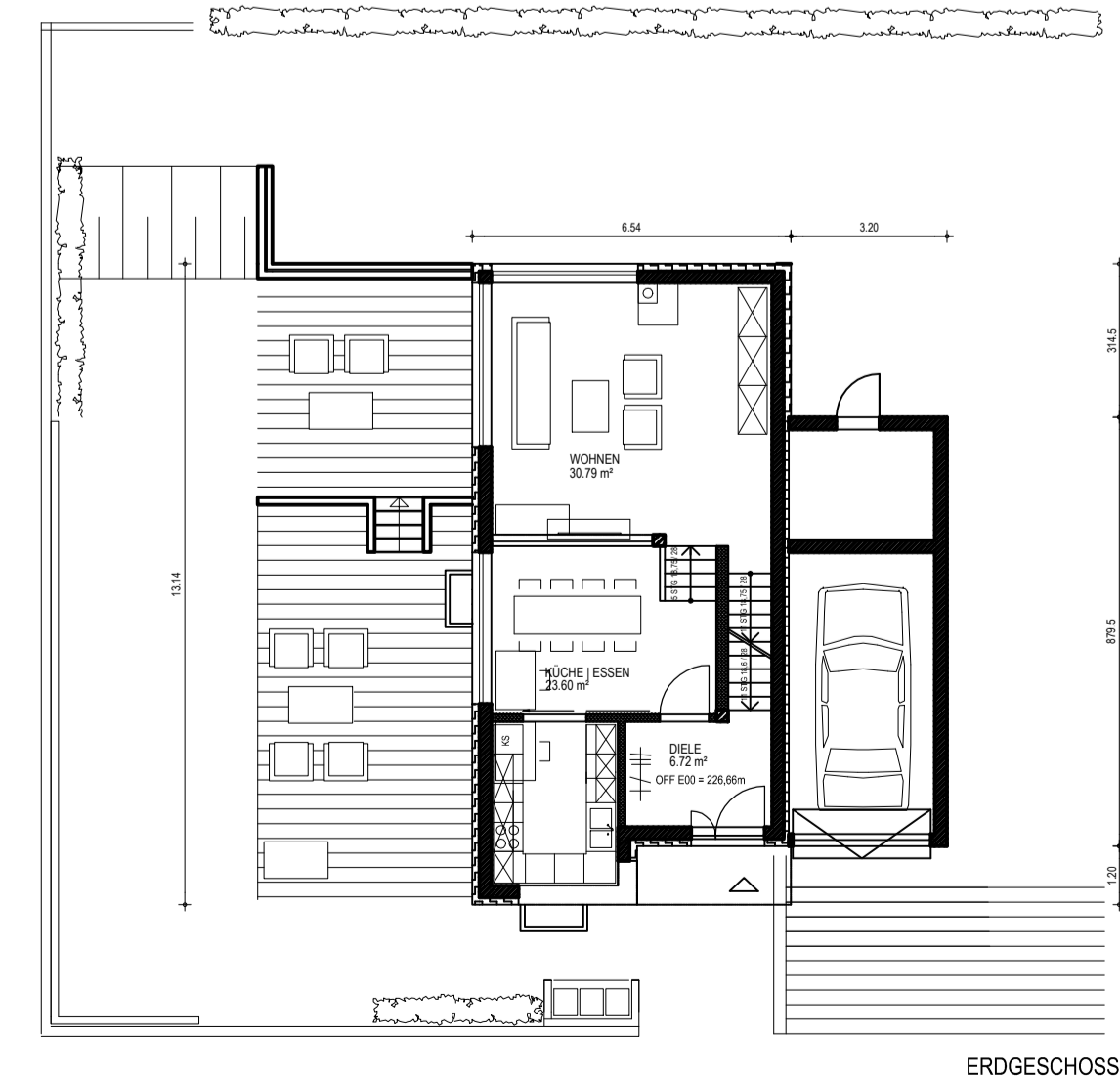
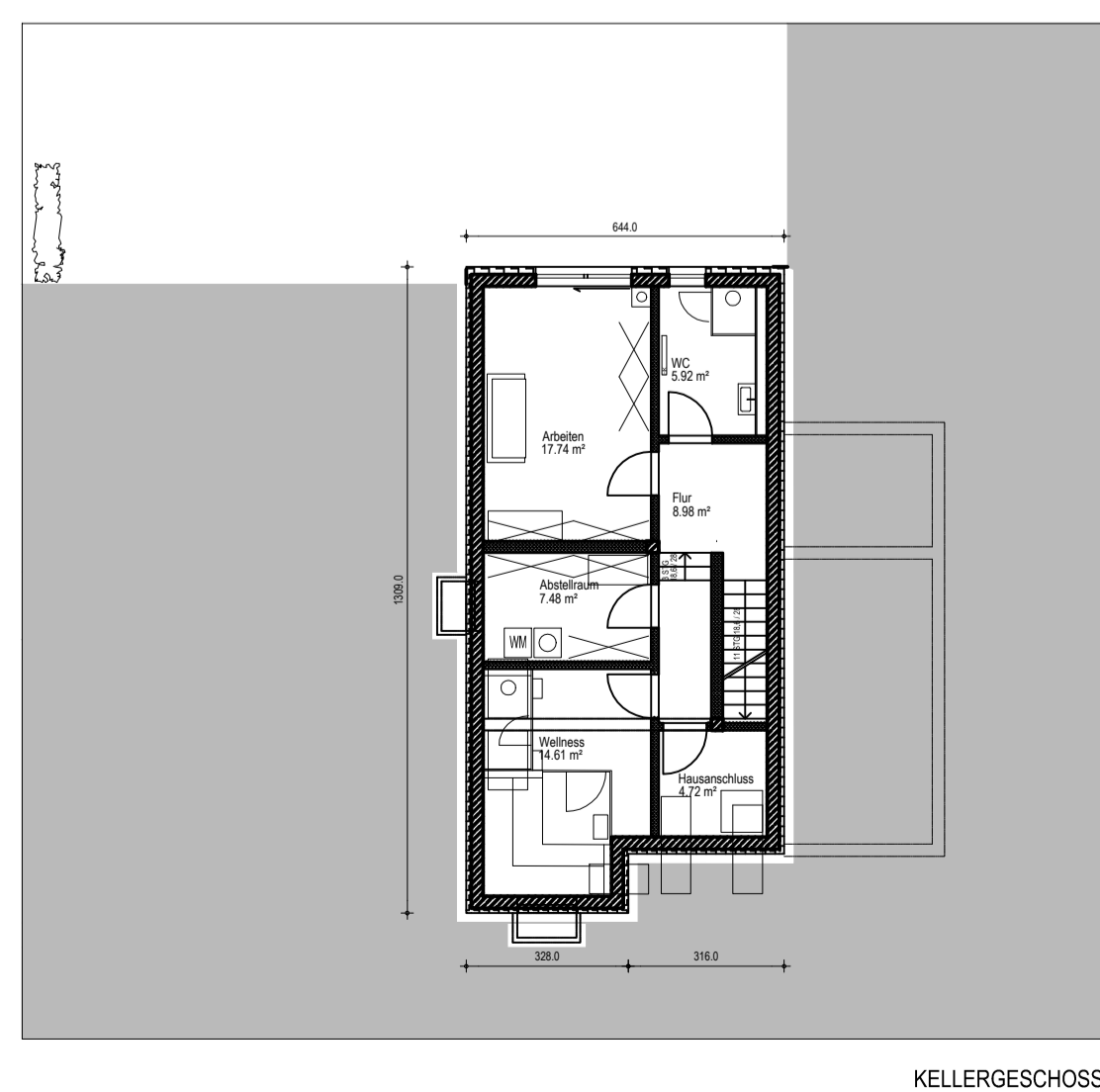
GRUNDRISSEBEISPIEL  
HAUSTYP I (Haus  
1,3,5,7,8,9,12,13)



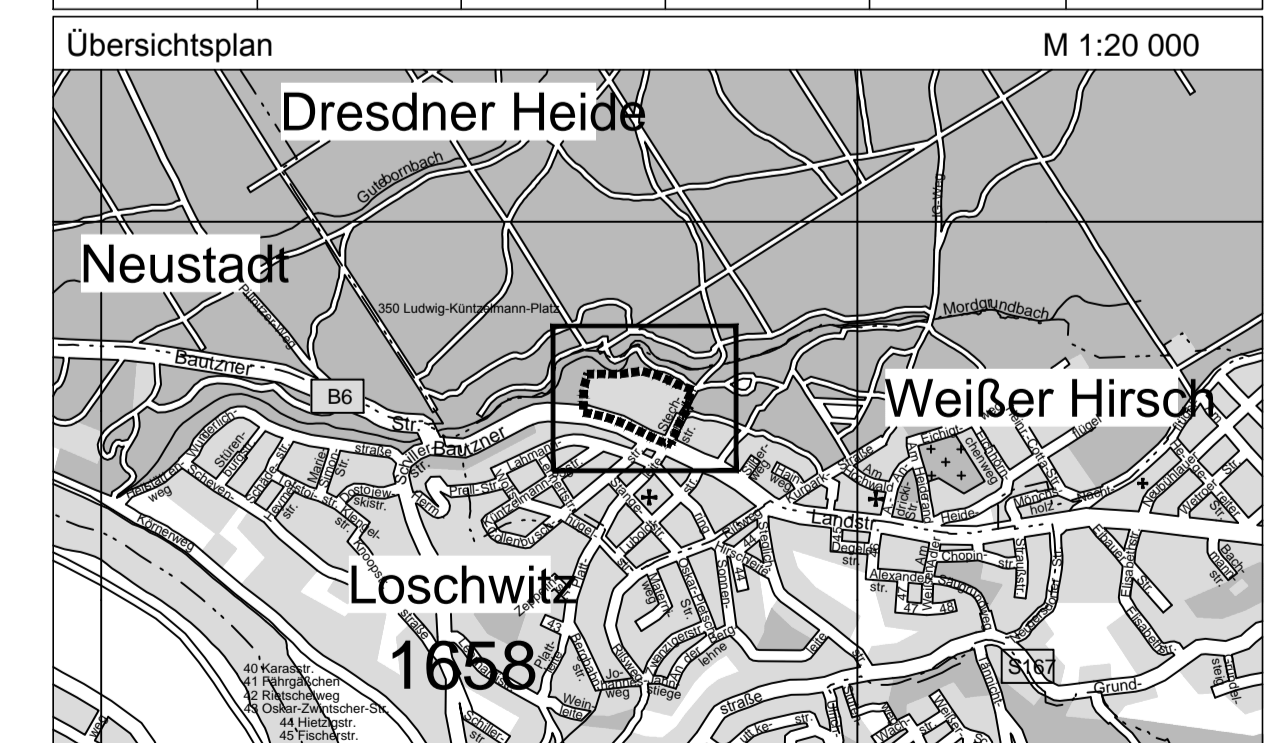
GRUNDRISSEBEISPIEL  
HAUSTYP II (Haus 2,4,10,11)



GRUNDRISSEBEISPIEL  
HAUSTYP III (Haus 6,14)



Stadtverwaltung Dresden Stadtplanungsamt Amtsleiter		Fassung 22. Mai 2012	
Planungsbüro <b>weber + partner</b>		Vorhabenräger <b>Baubau</b>	
Planrechnerin		Suchbearbeiterin	
SQL 61.3.2	Alt-Lr 61.3	SQL 61.1.3	Alt-Lr 61.1



LANDESHAUPTSTADT DRESDEN

**Vorhabenbezogener  
Bebauungsplan Nr. 6009**  
Dresden-Weißer Hirsch  
Lahmann-Sanatorium

- Vorhabenplan Einfamilienhäuser -  
- Entwurf zum Satzungsbeschluss -

Maßstab 1 : 150 Blatt 4 von 6