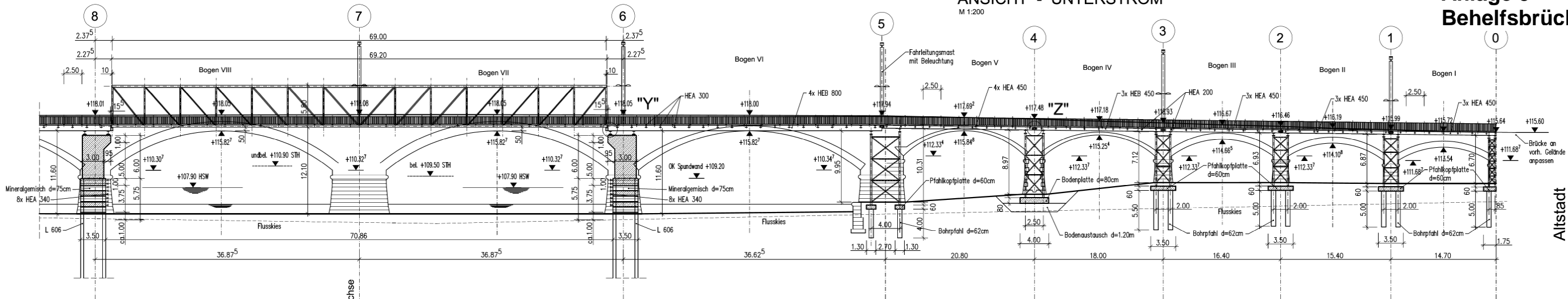


Anlage 5 Behelfsbrücke

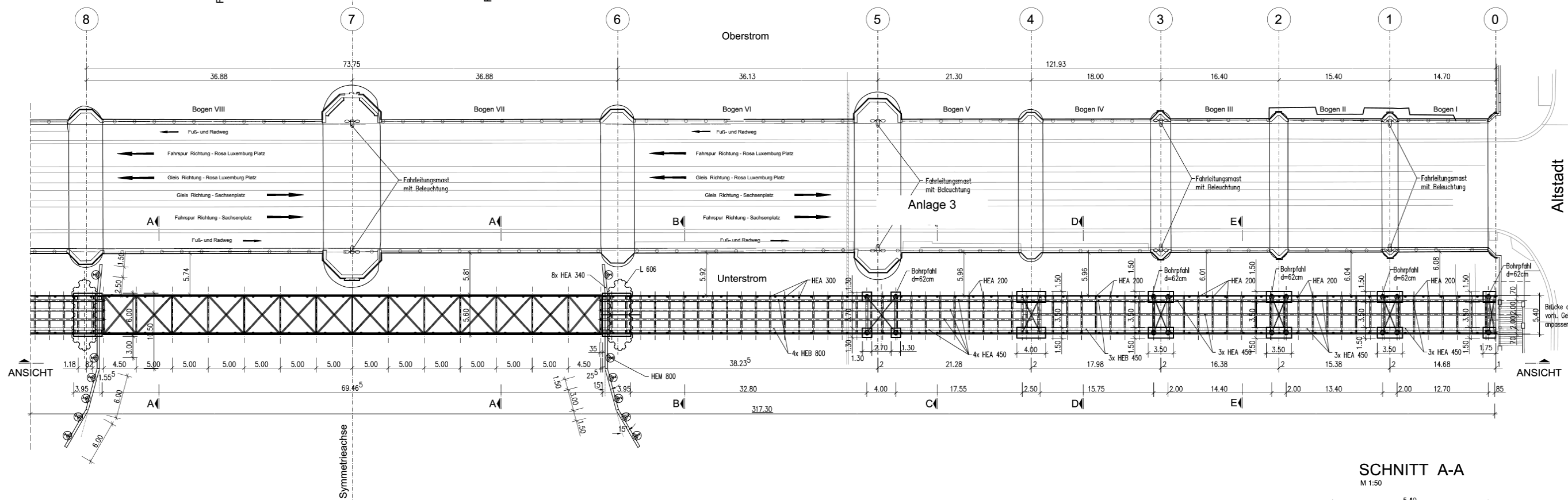
ANSICHT - UNTERSTROM

M 1:200



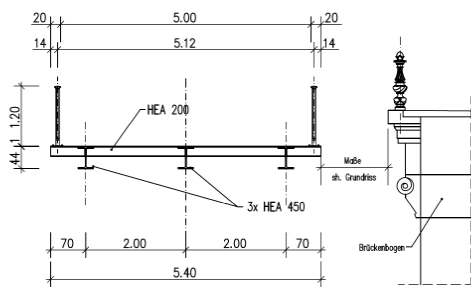
DRAUFSICHT

M 1:200



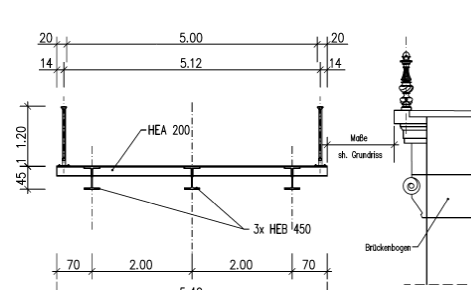
SCHNITT E-E

M 1:50



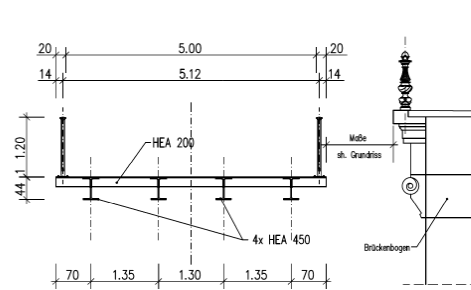
SCHNITT D-D

M 1:50



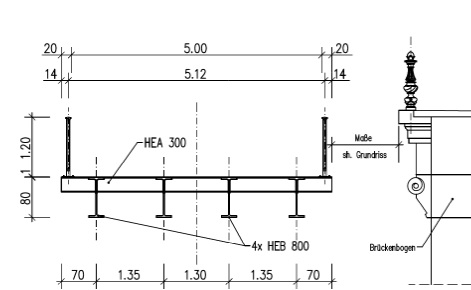
SCHNITT C-C

M 1:50



SCHNITT B-B

M 1:50



SCHNITT A-A

M 1:50

